



# BOOK I: NIA'S FIRST DAY



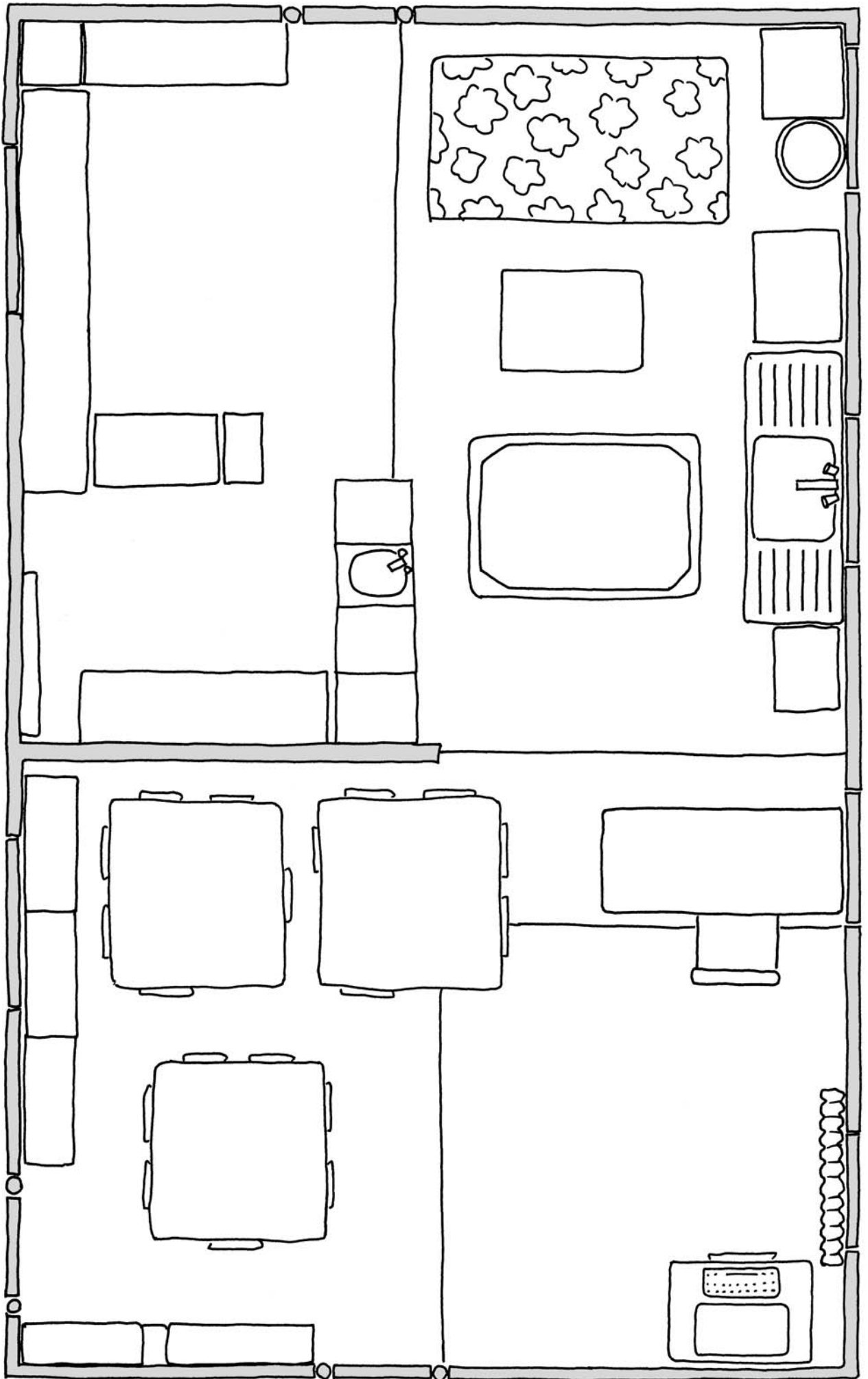
Storybook page nos	Key questions for class/group discussion.	Discussion and activities	Resources
Inside front cover and page 1	<p><b>Where is the school?</b> <b>What is it like?</b></p>	<ul style="list-style-type: none"> <li>Identify the geographical features and Nia's house.</li> <li>Talk about where you would like to play in Park Street School playground.</li> <li>Begin drawing/ writing at word level about what the school is like.</li> <li>Talk about and draw a picture of your school.</li> <li>Compare Nia's school with your school.</li> </ul>	<p><b>Page nos in The Teacher's Book</b> 21, 22, 23 29 13</p>
Pages 4 & 5	<p><b>Who lives in this house?</b> <b>What is the kitchen like?</b></p> <ul style="list-style-type: none"> <li>What do you think the family can see, hear, smell, feel taste?</li> <li>Where are Gerry, the cat, the dog, Dad, Mam, Huw, Ben etc?</li> <li>What are they doing?</li> <li>What can Gerry, the cat and the dog see?</li> <li>What is Gerry thinking? Why?</li> <li>What do you think about the kitchen? What is your kitchen like at breakfast time?</li> </ul> <p><b>What is Nia going to do today?</b></p> <ul style="list-style-type: none"> <li>What time is it?</li> </ul>	<ul style="list-style-type: none"> <li>Introduce the members of the family. Use the resource sheets to match the pictures to the descriptions.</li> <li>Choose one member of the family and think about what they can see, hear, smell, feel and taste. Record your ideas.</li> <li>Talk and record what you think about the kitchen.</li> <li>Record what Gerry thinks about the kitchen.</li> <li>Draw and label your kitchen at breakfast time.</li> <li><i>Extension activities:</i> draw a simple plan of the table.</li> <li>Compare your kitchen with Nia's.</li> <li>Talk about how Nia is feeling, remembering how you felt on your first day at school.</li> <li>Begin recording what Nia does at different times of the day.</li> </ul>	<p>9, 10 11 12 19 13 28</p>
Pages 6 & 7	<p><b>Where is Nia going?</b></p> <ul style="list-style-type: none"> <li>How is she travelling to school?</li> <li>How are the other children travelling to school?</li> <li>How do you travel to school and how long does it take you to get there?</li> </ul> <p><b>What is it like in the street ?</b></p> <ul style="list-style-type: none"> <li>What can Nia/Gerry see and hear?</li> <li>What can you see as you travel to school?</li> </ul> <p><b>What is the weather like?</b></p>	<ul style="list-style-type: none"> <li>Talk about how Nia is travelling to school, where she has come from and how she will get there.</li> <li>Talk about how the other children in the picture are travelling to school.</li> <li>Talk about how you travel to school and compare it with how Nia travels to school.</li> <li>Make a picture graph about how your group/class travel to school. Talk about why some people walk and some people go by car etc.</li> <li>Identify the geographical features.</li> <li>Talk about the street furniture and what each piece is used for.</li> <li>Continue drawing/ writing at word level about what the school is like.</li> <li>Draw/list the things that Nia/Gerry can see, hear, feel and smell as they walk along the road.</li> <li>Begin making a weather chart for the day.</li> </ul>	<p>29 11 30</p>
Pages 8 & 9	<p><b>Where is the cloakroom?</b></p> <ul style="list-style-type: none"> <li>Which way did they go?</li> <li>What can Gerry see?</li> </ul>	<ul style="list-style-type: none"> <li>Talk about where Nia's cloakroom is, using the large plan. Put the black and white picture of Nia in the correct place. Plot the route from the street to the cloakroom.</li> <li><i>Extension activity:</i> Mark Nia's cloakroom on the black and white copy of the school plan. Colour/label it and begin to make a key.</li> </ul>	<p>Large plan/ 25</p>
Pages 10 & 11	<p><b>Where is Nia now?</b></p> <ul style="list-style-type: none"> <li>Where is the classroom?</li> </ul> <p><b>What are the children doing there?</b></p> <ul style="list-style-type: none"> <li>What time is it?</li> <li>What is the weather like?</li> </ul>	<ul style="list-style-type: none"> <li>Talk about where Nia's classroom is by using the large plan. Put the black and white picture of Nia in the correct place. Plot the route from the cloakroom to the classroom.</li> <li><i>Extension activity:</i> Mark Nia's classroom on the black and white copy of the school plan. Colour/label it and enter it on the key.</li> <li>Talk about all the things that the children are doing in the classroom and draw/list them.</li> <li>Continue recording what Nia does at different times of the day.</li> <li>Continue the weather chart for the day.</li> </ul>	<p>Large plan/ 25 28 30</p>

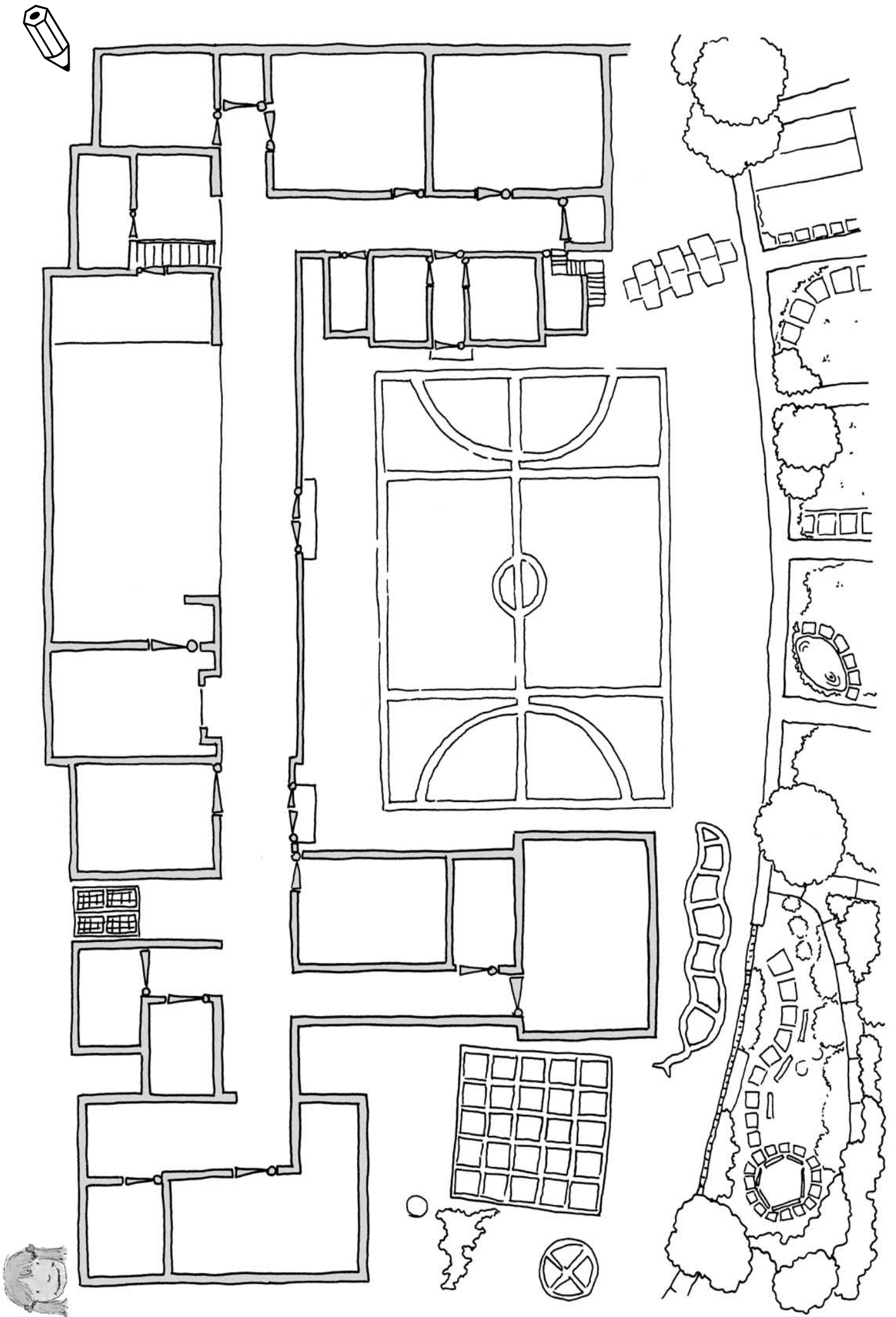


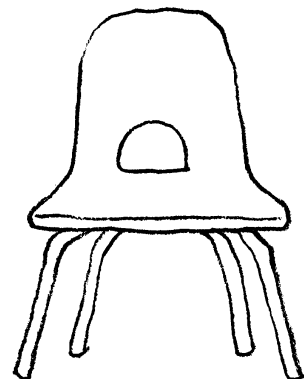
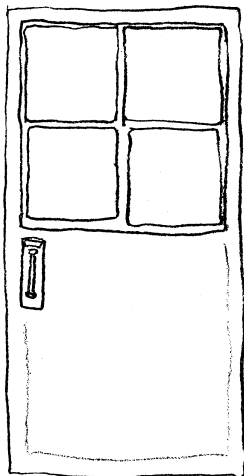
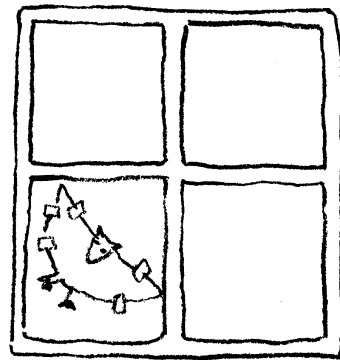
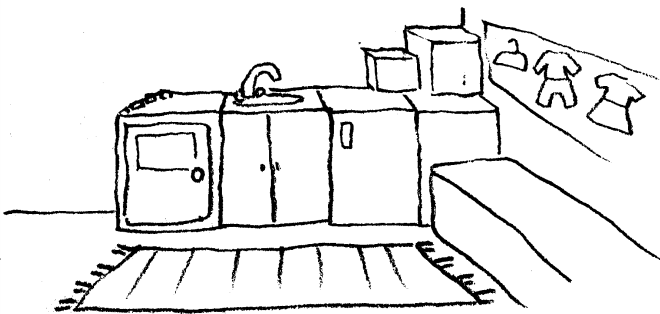
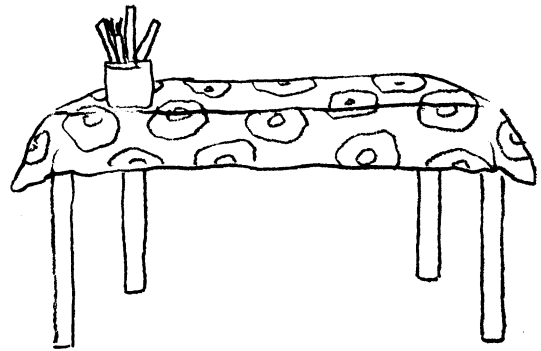
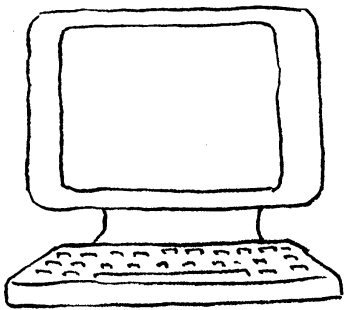
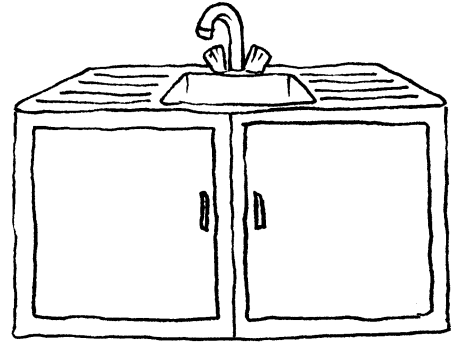
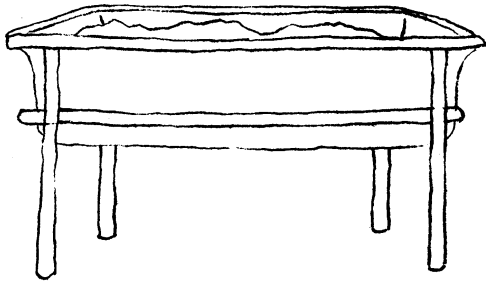
Pages 12 & 13	<p><b>Where is Gerry and what can he see?</b></p> <ul style="list-style-type: none"> <li>• Who is Kabo?</li> <li>• What are Kabo and Nia doing?</li> <li>• Is it a real place?</li> <li>• What kind of place would you make in a sand tray?</li> </ul>	<ul style="list-style-type: none"> <li>• Draw what you think Gerry can see from his chair.</li> <li>• Introduce Kabo, using the information sheet about him. Talk about Kabo's name, Nia's name and where your own name might have come from.</li> <li>• Talk about what kind of place Kabo and Nia are building. Does it have roads, hills or a river? What do you think about it?</li> <li>• Talk about what you would like to build in a sand tray.</li> <li>• Make that place. Then draw a picture and label it.</li> <li>• <i>Extension activity:</i> Make a plan of the place you have made.</li> </ul>	9, 10
Pages 14 & 15	<p><b>What is Nia doing now?</b></p> <ul style="list-style-type: none"> <li>• How does she feel?</li> <li>• What time is it?</li> </ul>	<ul style="list-style-type: none"> <li>• Talk about how Nia feels.</li> <li>• Continue recording what Nia does at different times of the day.</li> </ul>	28
Pages 16 & 17	<p><b>Where is Gerry and what can he see?</b></p> <ul style="list-style-type: none"> <li>• What are the children/adults doing in the classroom?</li> </ul> <p><b>What do you think it is like to be in the classroom?</b></p> <p><b>What is your classroom like?</b></p> <ul style="list-style-type: none"> <li>• How is it similar to and different from your classroom?</li> </ul>	<ul style="list-style-type: none"> <li>• Talk about where Gerry is and draw and list what he can see</li> <li>• Place the pictures of the features in the correct places on the page. Match the words to the pictures of the features.</li> <li>• Draw/list the things that Nia can see, hear, feel and smell. List/draw what people are doing.</li> <li>• Talk about what different parts of Nia's classroom are like, Make labels of nouns and adjectives and place them on the page.</li> <li>• Continue drawing/ writing at word level about what the school is like.</li> <li>• Draw a picture of your classroom</li> <li>• Talk about and record how Nia's classroom is similar to or different from your classroom?</li> </ul>	26 27 11 29 13
Pages 18 & 19	<p><b>What is a plan and what can you see on it?</b></p> <ul style="list-style-type: none"> <li>• Where are the children doing different things?</li> </ul>	<ul style="list-style-type: none"> <li>• Talk about what this plan is, identifying the features on it. Match the plan with the picture on the previous page.</li> <li>• Place the pictures/labels of the features on the plan.</li> <li>• Draw small pictures/symbols of what the children are doing. Place them on the plan. Write nouns and adjectives for each one and place them on the plan.</li> <li>• <i>Extension activities:</i> On the black and white copy of the plan draw symbols to show the features/ activities. Make a key.</li> <li>• Identify alphanumeric coordinates of the features in the classroom.</li> <li>• Make a plan of your classroom.</li> </ul>	Large plan of classroom 26/ 27 24 20
Pages 20 & 21	<p><b>What are the children going to do next ?</b></p> <ul style="list-style-type: none"> <li>• How does Nia feel?</li> <li>• What time is it?</li> </ul>	<ul style="list-style-type: none"> <li>• Talk about what will happen next and how Nia feels. Where is Gerry?</li> <li>• Continue recording what Nia does at different times of the day.</li> </ul>	28
Pages 22 & 23	<p><b>Where is the playground?</b></p> <ul style="list-style-type: none"> <li>• Where are Nia and Huw?</li> </ul> <p><b>What is the playground like?</b></p> <ul style="list-style-type: none"> <li>• What is painted on the playground?</li> <li>• What is the garden like?</li> <li>• What lives in the garden and playground?</li> </ul> <p><b>What are the children/adults doing in the playground?</b></p> <ul style="list-style-type: none"> <li>• What is Gerry thinking about?</li> </ul> <p><b>What is the weather like?</b></p>	<ul style="list-style-type: none"> <li>• Talk about where the playground is by using the large plan. Put the black and white pictures of Nia and Huw in the correct place. Trace the route from the classroom to the playground.</li> <li>• <i>Extension activity:</i> Mark the playground on the black and white copy of the school plan. Colour/label it and make a key.</li> <li>• Draw/list what the children/adults do in the playground. Talk about and record what the playground is like and what you think about it.</li> <li>• Talk about what the girl on the compass rose is doing. Use the compass rose on your playground/classroom floor to play a game. You could use the recording sheet.</li> <li>• Look at a map of the British Isles. Identify the land/ sea and Wales. Colour/label the black and white recording sheet. <i>Extension activity:</i> colour/label the countries of UK and/or make a jigsaw.</li> <li>• Continue drawing/writing at word level about what the school is like. Record what Gerry thinks about the playground.</li> <li>• Continue the weather chart for the day.</li> </ul>	Large plan of school / 9 25 17 15 29 30



<p>Pages 24 &amp; 25</p>	<ul style="list-style-type: none"> <li>• <b>Where do Huw and Nia go and what did they see?</b></li> <li>• What are the different places like?</li> </ul> <p><b>Which way did they go?</b></p> <ul style="list-style-type: none"> <li>• What do they see on the way?</li> <li>• How far did they go?</li> <li>• Which way do you walk around your school?</li> </ul>	<ul style="list-style-type: none"> <li>• Talk about the four pictures that show different places around the school. Think about the features and what happens in each place. Put the photocopied pictures in the correct place on the large plan.</li> <li>• Continue drawing/writing at word level about what the school is like.</li> <li>• Talk about the journey around school using directional vocabulary. Plot the route taken on the plan.</li> <li>• Lay footprints on the plan to show their route and measure the distances. Talk about the distances in comparative terms e.g. is it further to Huw's classroom or to the toilets?</li> <li>• <i>Extension activity:</i> draw footprints on a black and white plan and measure the distances.</li> <li>• Talk about the routes to different places in your school by using a similar plan. Plan journeys around school, giving directions and estimating distances, e.g. how many paces is it to the toilets?</li> </ul>	<p>Large plan of school</p> <p>29</p> <p>Large plan</p> <p>16</p> <p>25</p>
<p>Pages 26 &amp; 27</p>	<p><b>Where is the dining hall and what is it like?</b></p> <ul style="list-style-type: none"> <li>• Where are Nia, Kabo and Gerry?</li> <li>• What can Gerry see, hear and smell and what is he thinking about?</li> </ul> <p><b>How is it similar to and different from our dining hall?</b></p> <ul style="list-style-type: none"> <li>• What time is it?</li> </ul> <p><b>What is the weather like?</b></p>	<ul style="list-style-type: none"> <li>• Talk about where the dining hall is, using the large plan. Put the black and white pictures of Nia, Kabo and Gerry in the correct place.</li> <li>• <i>Extension activity:</i> Mark the dining hall on the black and white copy of the school plan. Colour/label it and make a key.</li> <li>• Record what Gerry can see, hear, smell, feel and what he thinks about the dining hall? Record what you think about the dining hall.</li> <li>• Continue drawing/writing at word level about what the school is like.</li> <li>• Compare and record dinner time in Nia's school with dinner time in your school.</li> <li>• Continue recording what Nia does at different times of the day.</li> <li>• Continue the weather chart for the day.</li> </ul>	<p>Large plan of school 9</p> <p>25</p> <p>11, 19</p> <p>12</p> <p>29</p> <p>13</p> <p>28</p> <p>30</p>
<p>Pages 28 &amp; 29</p>	<p><b>What are people doing in the classroom?</b></p> <ul style="list-style-type: none"> <li>• What are Nia and Kabo doing and where are they?</li> <li>• Where is Gerry now and what can he see?</li> <li>• Where does Kabo's grandmother live?</li> <li>• Where do giraffes live?</li> </ul> <p><b>What do you think about the classroom?</b></p> <p><b>What is the weather like now?</b></p>	<ul style="list-style-type: none"> <li>• Talk about what people are doing in the classroom .</li> <li>• Place the pictures/labels of the features on the page. Use the large plan and turn to match the picture on the pages. Put the black and white pictures of Nia, Kabo and Gerry in the correct place on the plan.</li> <li>• <i>Extension activity:</i> Draw Nia, Kabo and Gerry on the black and white plan.</li> <li>• Find Africa on a globe. Draw/label a giraffe on a sticky label and place it on Africa.</li> <li>• Record what you think about the Nia's classroom. Draw what you would like to do in Nia's classroom.</li> <li>• Continue the weather chart for the day.</li> </ul>	<p>Large plan of classroom 26, 27, 9</p> <p>24</p> <p>12</p> <p>30</p>
<p>Pages 30 &amp; 31</p>	<p><b>What time is it now?</b></p> <ul style="list-style-type: none"> <li>• Where is Nia going and how is she feeling now?</li> <li>• What did Nia and Gerry do at school?</li> <li>• What did Nia think about it?</li> </ul> <p><b>How is it similar to and different from our school?</b></p> <p><b>What is the weather like now?</b></p>	<ul style="list-style-type: none"> <li>• Complete recording what Nia does at different times of the day.</li> <li>• Talk about what Nia would tell her Dad about school.</li> <li>• Make a list (drawn or written) of what Nia did in school.</li> <li>• <i>Extension activity:</i> Write a diary of her first day at school.</li> <li>• Record what Nia thought about school.</li> <li>• Describe and draw Nia's favourite place in school.</li> <li>• Compare and record Nia's school with your school.</li> <li>• Complete the weather chart for the day.</li> </ul>	<p>28</p> <p>46</p> <p>12</p> <p>13</p> <p>30</p>
<p>Page 31 and inside cover</p>	<p><b>What is the school like?</b></p> <p><b>What other journeys would you like to make around Nia's school?</b></p> <ul style="list-style-type: none"> <li>• Which way would you go?</li> <li>• Which journey is the shortest/longest?</li> </ul> <p><b>What do you think about Nia's school?</b></p>	<ul style="list-style-type: none"> <li>• Talk about the plan of the school. Which parts of the school are inside and which parts are outside on our plan? Where are the different rooms?</li> <li>• Think about some questions you would like to ask about Nia's school.</li> <li>• Use the distance recording sheet to record the nearest and furthest places from Nia's classroom.</li> <li>• <i>Extension activity:</i> Choose journeys around the school, plot the routes on the large plan and draw them on the black and white plan. Measure and compare the distances.</li> <li>• On a black and white plan colour the places you like red and the places you don't like blue.</li> </ul>	<p>Large plan of school</p> <p>18</p> <p>Large plan of school /25</p> <p>25</p>









sand tray

sink

computer

painting table

home corner

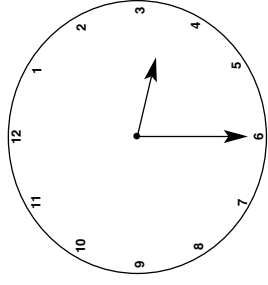
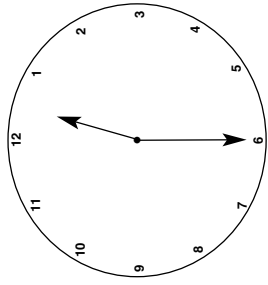
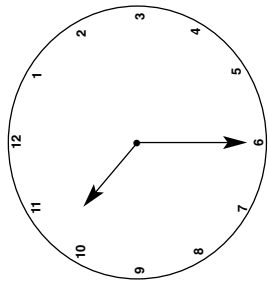
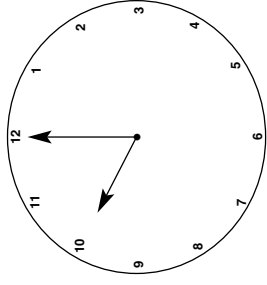
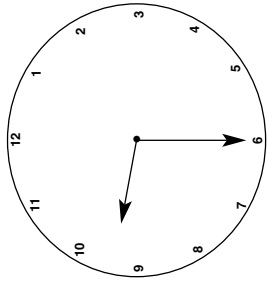
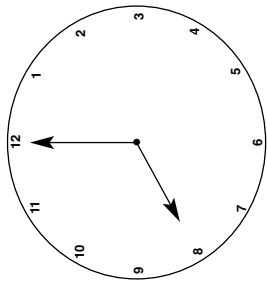
window

door

chair



What does Nia do at different times of the day?







What is Nia's school like?



This is what I have found out from:

above

outside

the classroom

the playground

Huw and Nia's walk  
around the school

the dining hall



## Nia's weather chart

This is what the weather was like when Nia was:



going to school

going into the classroom

in the playground

having her dinner

playing with the globe

going home